



Winter Solstice



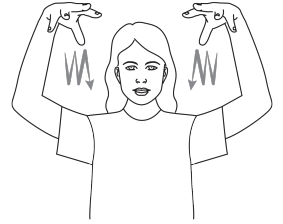
when



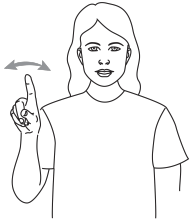
play



short



rain



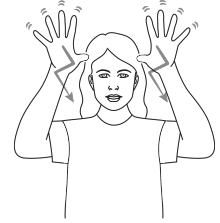
what



make



wet



snow



cook



see



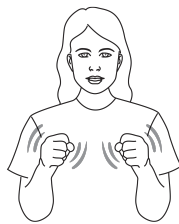
day



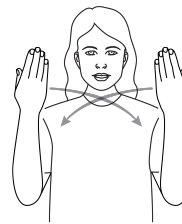
sun



feel



cold



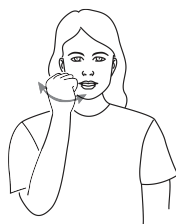
night



wind



like



warm



weather



year



Winter Solstice



when

Place dominant fingertips on cheek and tap in sequence quickly

play

Hold both hands at waist height with palms. Move simultaneously in small outward circles.

short

Place hands open with palms facing and move them together (or use natural gesture appropriate to the context).

rain

Place both slightly cupped hands, fingers spread and palms down, above shoulder height. Move formations down several times.

what

Point dominant index finger, palm away from body, at shoulder height. Move formation at wrist from side to side, twice.

make

Make fists with both hands. Bounce dominant fist on non-dominant, while making small circles towards body.

wet

Open dominant hand, palm up. Simultaneously close tips of all fingers to thumb, twice. *May use both hands.

snow

Open both hands, hold above side of head, palms forward, wriggle fingers while moving hands in a zig-zag formation.

cook

Mime holding a bowl in non-dominant arm and stirring with dominant fist.

see

Move dominant index finger forward from eye (natural gesture). *May use index and middle fingers slightly apart.

day

Sweep both open dominant hands, palm down or palm towards body, in an arc from waist height to shoulder height.

sun

Flick fingernails of dominant hand off ball of thumb while moving hand diagonally down from head height.

feel

Bend middle finger of dominant hand in, other fingers spread. Place tip of middle finger on dominant side of the body at waist height. Trace upwards in a single movement

cold

Hold both arms bent, hands in fists. Move formation in quick, short sideways movements, several times.

night

Sweep both open hands, palms facing body, in downward arcs from near shoulder to waist. *May be done with palms down.

wind

Simultaneously wave both open hands, palms facing body, at either side of face.

like

Move open dominant hand in small circles on chest.

warm

Place dominant fist against cheek. Rock hand from side to side.

weather

Hold both hands, fingers slightly spread and palms facing away from body, at chest height. Simultaneously move both hands from side to side several times.

year

Fingerspell "Y" with a downward stress, and hold still in front of body.



Winter Solstice



when



play



short (little)



rain



what



make



wet



snow



cook



see



day



sun



feel



cold



night



wind



like



warm



weather



year

