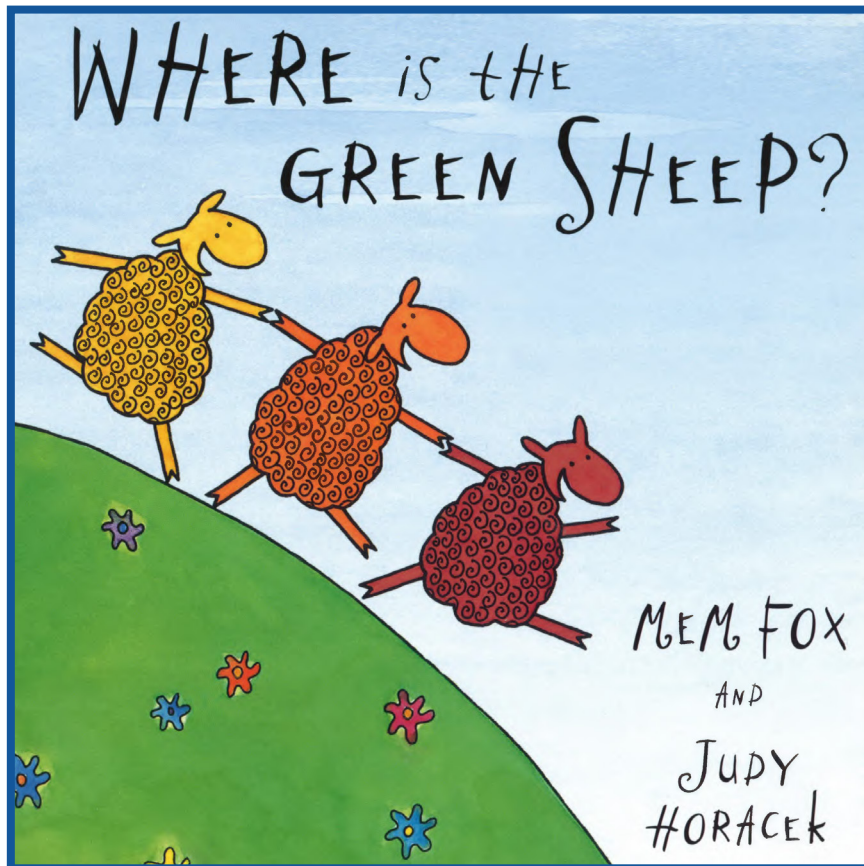


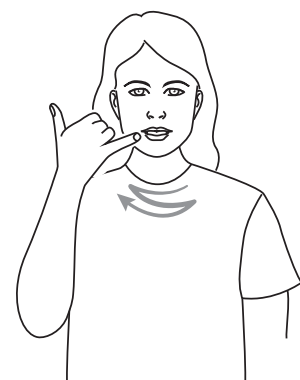
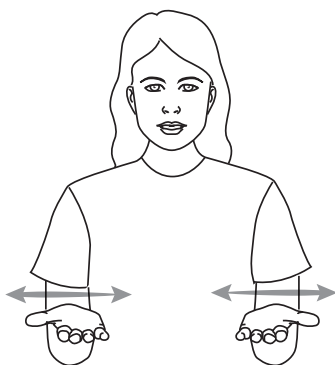


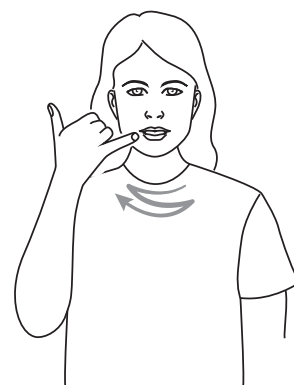
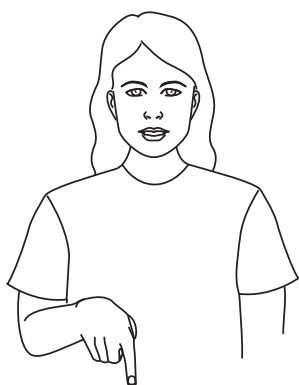
Key Word Sign™
Australia



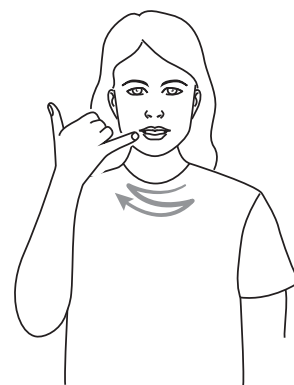
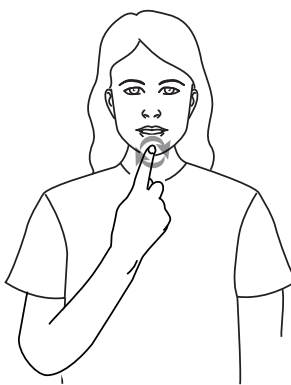
Where is the Green sheep?

Key Word Sign Guide (Southern Signs)

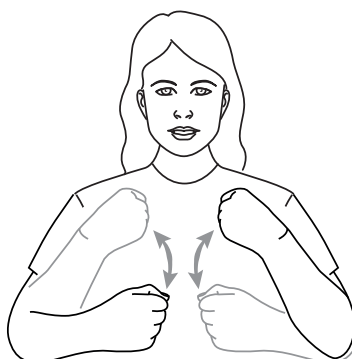




Here is the **blue** sheep.



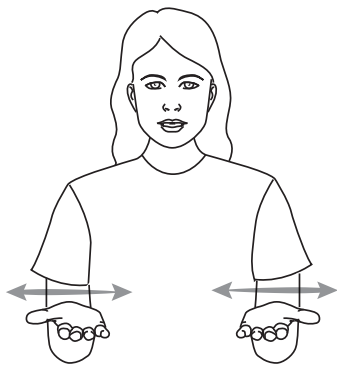
And **here** is the **red** sheep.



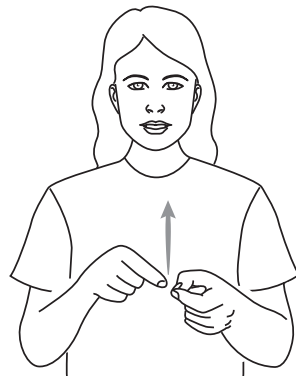
Here is the **bath** sheep.



And **here** is the **bed** sheep.



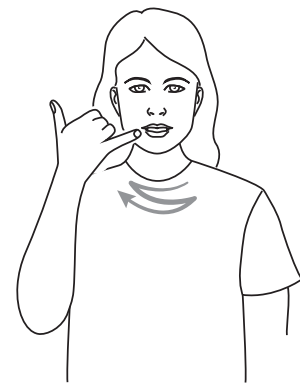
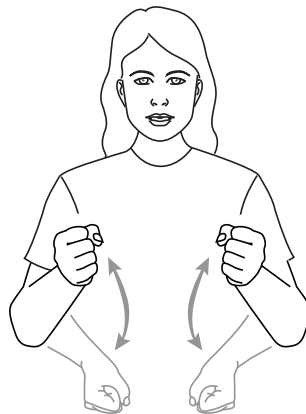
But **where** is the **green** sheep?



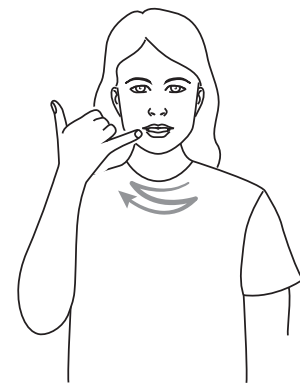
Here is the **thin** sheep.



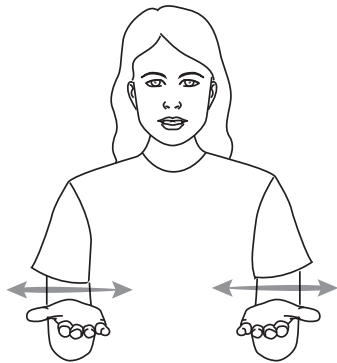
And **here** is the **wide** sheep.



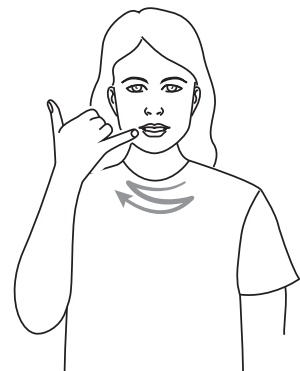
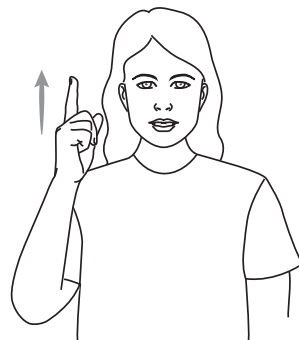
Here is the **swing** sheep.



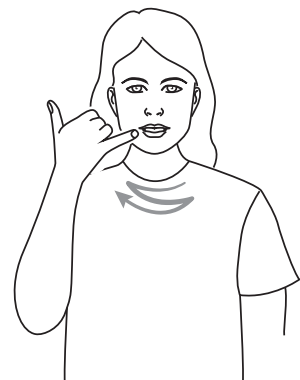
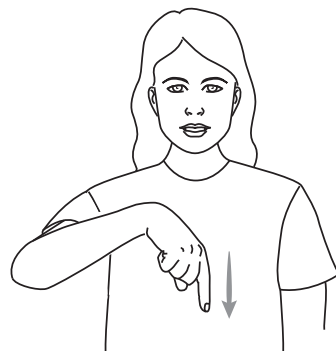
And **here** is the **slide** sheep.



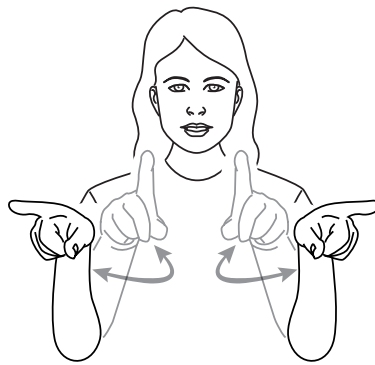
But **where** is the **green** sheep?



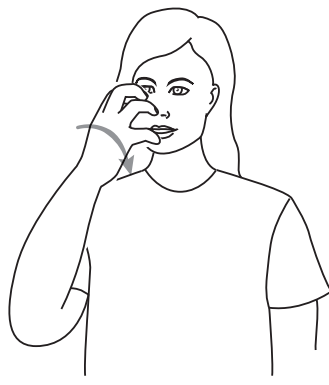
Here is the **up** sheep,



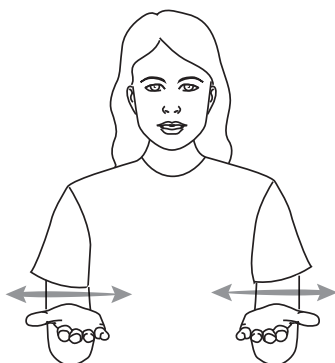
and **here** is the **down** sheep.



Here is the **band** sheep.



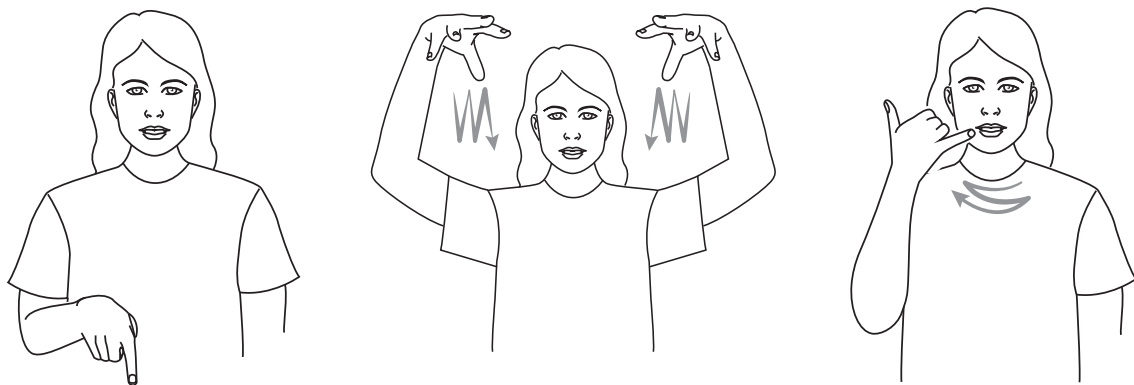
And **here** is the **clown** sheep.



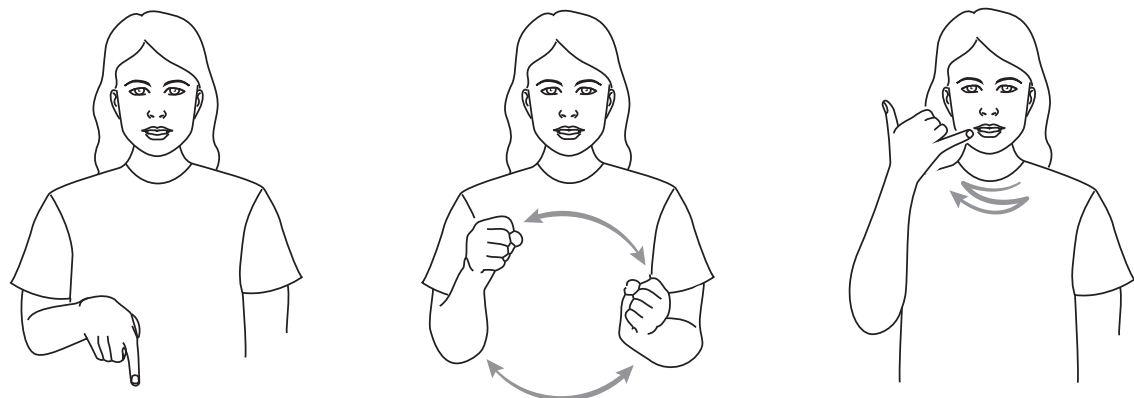
But **where** is the **green** sheep?



Here is the sun sheep.



And here is the rain sheep.



Here is the car sheep,



and **here** is the **train** sheep.



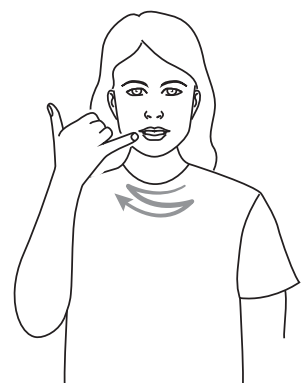
But **where** is the **green** sheep?



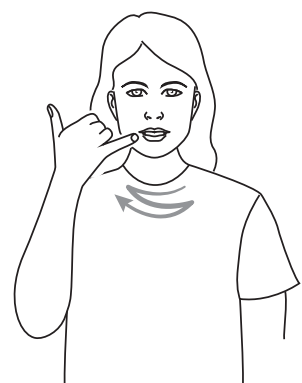
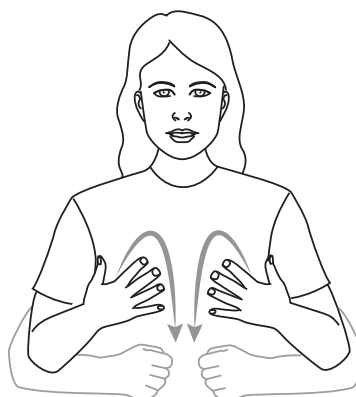
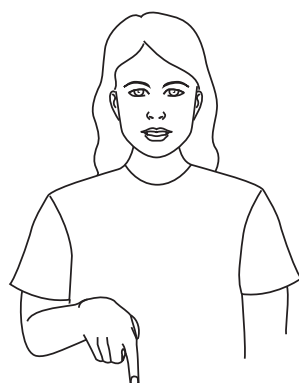
Here is the **wind** sheep.



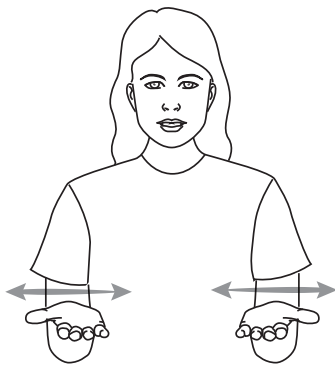
And **here** is the **wave** sheep.



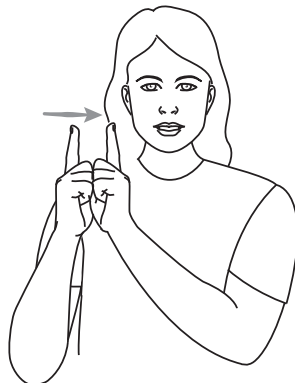
Here is the **scared** sheep,



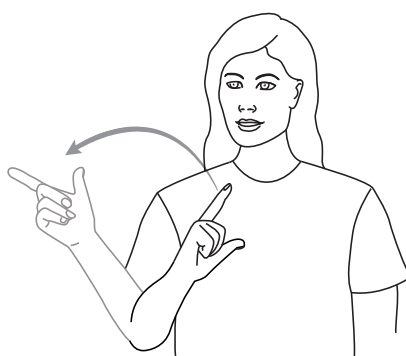
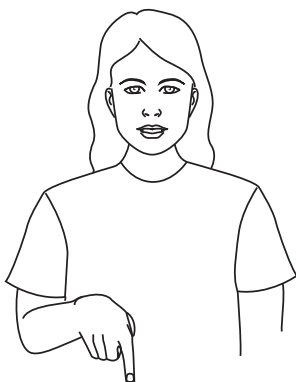
and **here** is the **brave** sheep.



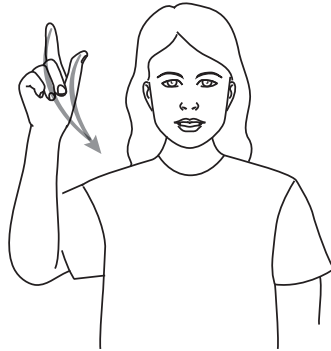
But **where** is the **green** sheep?



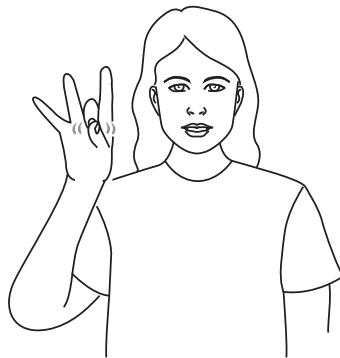
Here is the **near** sheep.



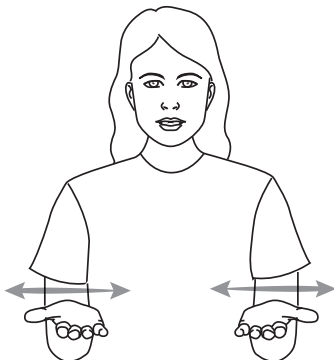
And **here** is the **far** sheep.



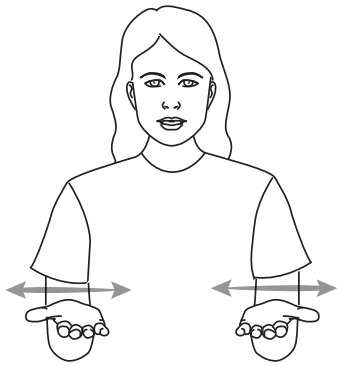
Here is the **moon** sheep.



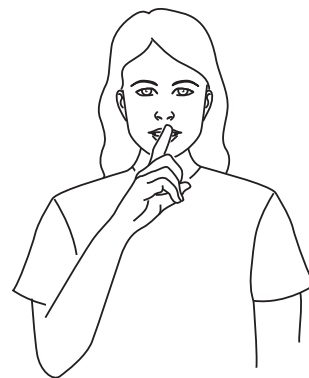
And **here** is the **star** sheep.



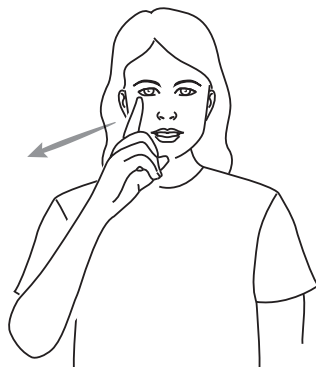
But **where** is the **green** sheep?



Where is that **green** sheep?



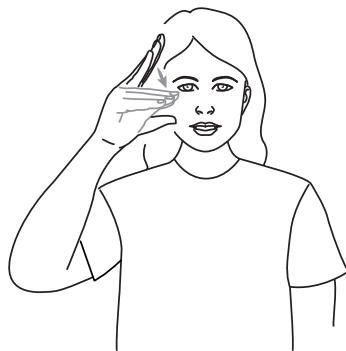
Turn the page **quietly** —



let's take a **peep**...



Here's our green sheep,



fast asleep.

Key Word Sign Guide (Southern)

ASLEEP (SLEEP)

Place thumb of non-dominant hand at side of eye, flat hand open and palm facing the midline. Close fingers down onto thumb.



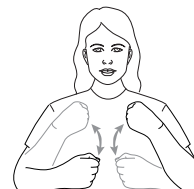
BAND (MUSIC)

Move both extended index fingers, palms down, from side to side in opposite directions as though conducting music.



BATH

Make fists with both hands. Move up and down chest alternately.



BED

Place open dominant hand against side of face, tilting head to the side.



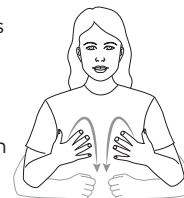
BLUE

Rub fingertips of open dominant hand up and down back of non-dominant hand.



BRAVE

Hold both open hands facing in and in front of body at waist height. Bring both hands up and finish with hands fisted, with emphasis.



CAR

Clench both fists in front of body, move formation as if holding an imaginary steering wheel (natural gesture - mime the action).



CLOWN

Place open spread and crooked dominant hand over nose and twist slightly.



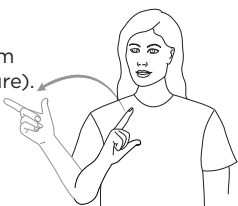
DOWN

Point extended dominant index finger down. Move formation down (natural gesture).



FAR

Point to a safe distance away from you (natural gesture).



GREEN

Place blade of open dominant hand on wrist of non-dominant arm. Move formation up to elbow.



HERE

Point dominant index finger downwards in front of body, palm down (natural gesture).



Key Word Sign Guide (Southern)



Key Word Sign™
Australia

MOON

Extend dominant index finger and thumb and hold this formation at head height. Move in a short downward arc, closing index finger onto thumb.



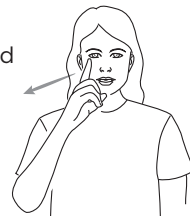
NEAR

Extend index fingers of both hands upwards with other fingers closed. Place hands together on dominant side of body and move formation up and down, twice.



PEEP (LOOK)

Move dominant index finger forward from eye (natural gesture).



QUIETLY

Point dominant index finger and rest in front of lips (natural gesture).



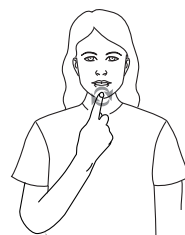
RAIN

Place both slightly cupped hands, fingers spread and palms down, above shoulder height. Move formations down several times.



RED

Place extended dominant index finger on chin. Move in a small circle.



SCARED

Cup dominant hand, fingers spread. Bounce fingertips on upper chest, twice. *Show tension in hand shape and increase movement to suit the degree of emotion.



SHEEP

Extend dominant little finger and thumb. Move tip of little finger back from corner of mouth, twice.



SLIDE

Rest open dominant hand, palm down, at wrist of relaxed non-dominant hand, palm down. Slide dominant hand down non-dominant hand to the fingertips.



STAR

Flick middle finger of dominant hand off ball of thumb, several times, while holding hand above and in front of head. Can be done with all fingers and using both hands.



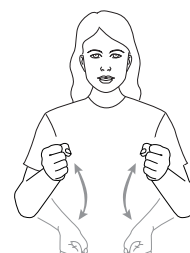
SUN

Flick fingernails of dominant hand off ball of thumb while moving hand diagonally down from head height.



SWING

Hold both fists at sides of body. Move hands, arms and body in slight swinging motion (natural gesture).



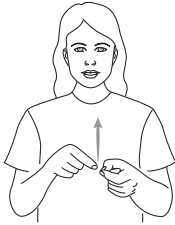
Key Word Sign Guide (Southern)



Key Word Sign™
Australia

THIN

Place both extended index fingers and thumbs together. Place fingertips of dominant hand formation on top of non-dominant fingertips. Move dominant hand formation up.



TRAIN

Crook and spread dominant index and middle fingers, palm facing centre. Move formation forward from the temple.



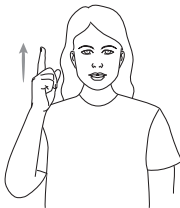
TURN (OVER)

Mime the action, example shown turning over an item using an open hand, palm down to palm up (natural gesture - mime the action).



UP

Point extended dominant index finger up. Move formation up (natural gesture).



WAVE (BEACH)

Mime waves breaking on the beach with open spread hands in front of body.



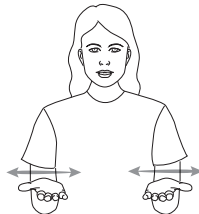
WIDE (BIG)

Place hands open with palms facing and move them apart (or use natural gesture appropriate to the context).



WHERE

Open both hands, palms up. Simultaneously move each hand from side to side, in opposite directions, twice.



WIND

Simultaneously wave both open hands, palms facing body, at either side of face.





Key Word Sign™
Australia

Fox, M. (2004). *Where is the Green Sheep?*
(J.Horacek, Illus.). Penguin Random House Australia.

This Key Word Sign guide has been produced by Key Word Sign Australia solely for the purpose of providing a person/s with a disability access to the content of the original book in a format consistent with their needs.

It is designed to be used in conjunction with the original material.

Section 113F of the Copyright Act 1968 (Cth) (Copyright Act) applies.