

# B-I-N-G-O

## Picture Communication Symbols

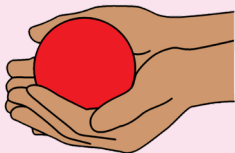


Key Word Sign™  
Australia

farmer



had



dog



**Bingo**

name



**B**

**I**

**N**

**G**

**O**

# B-I-N-G-O

## Key Word Sign

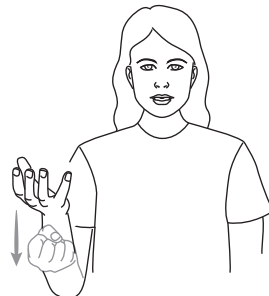


Key Word Sign™  
Australia

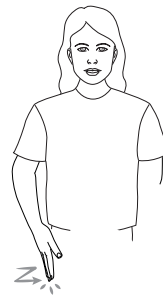
There was a **farmer**



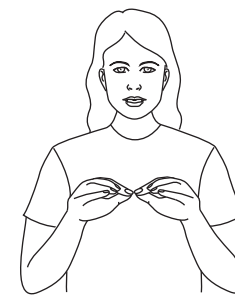
who **had**



a **dog**,



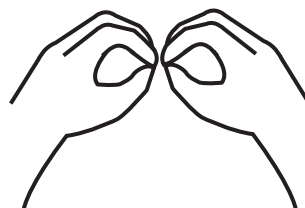
and **Bingo**



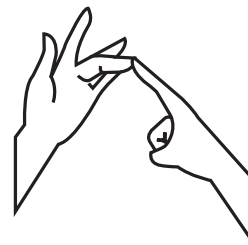
was his **name** - O



**B**



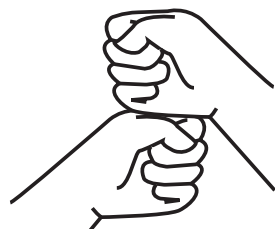
**I**



**N**



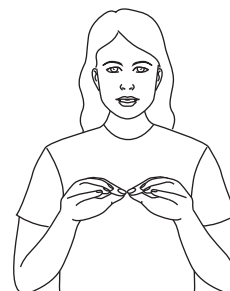
**G**



**O**



and **Bingo**



was his **name** - O.



## LYRICS

There was a **farmer**  
who **had** a **dog**,  
and **Bingo** was his **name** - O  
**B-I-N-G-O**  
**B-I-N-G-O**  
**B-I-N-G-O**  
and Bingo was his **name** - O.

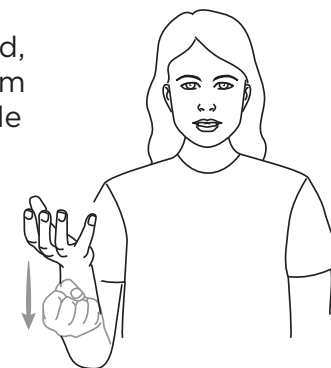
## FARMER

Place thumb edge of open dominant hand on chest, palm down. Move in arc to below waist level turning to palm up.



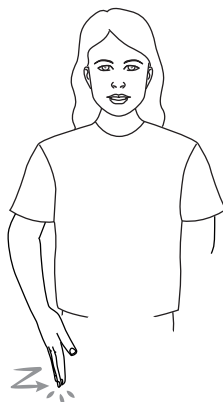
## HAD (have)

Cup dominant hand, fingers spread, palm up. Drop hand while closing into a fist.



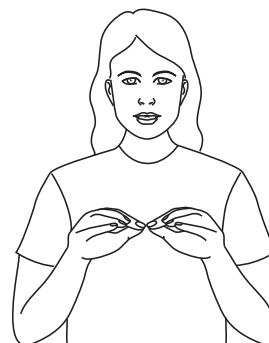
## DOG

Hit thigh with open dominant hand, twice.



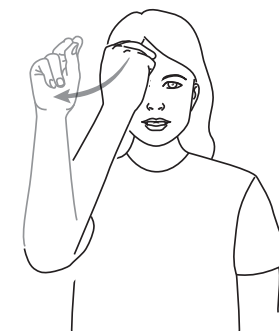
## BINGO (letter b)

Fingerspell the letter "B".



## NAME

Place extended dominant index and middle fingers on ball of thumb. Place tips of this formation on temple then move formation forward, turning palm away from body.



## B-I-N-G-O

Fingerspell "B", "I", "N", "G", "O".